



E-Learning with Open Remote Sensing and Geodata

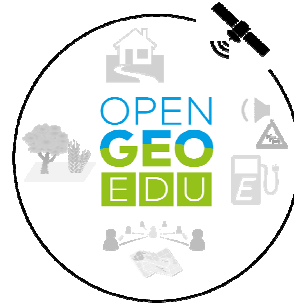
Henning Aberle, Michael Hovenbitzer
henning.aberle@bkg.bund.de michael.hovenbitzer@bkg.bund.de

Background

More and more geodata are open. This also includes geodata and remotely sensed information as offered by the EU-Earth observation programme Copernicus.

The joint e-Learning project "OpenGeoEdu" aims to exploit the of this information potential by an open online course. It covers a variety of current socio-spatial topics including monitoring of forests and assessment of urban areas, as also addressed by the UN-Sustainable Development Goals. The online project aspires to offer free and open quality education with a geo-spatial background.

Goals



- Integration of e-Learning into study courses with geospatial background
- Utilization of open (geo-)data and platforms for everybody
- Interdisciplinary transfer of knowledge



Topics & Case studies

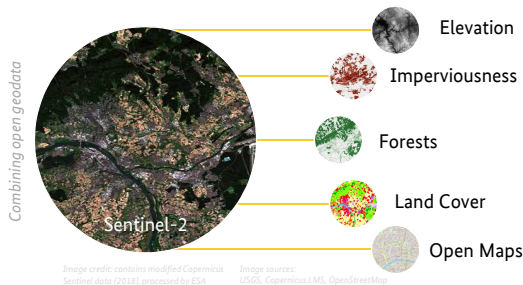
Implemented by the project partners

- Open Data
- Geographic Information Systems & Tutorials
- Electro Mobility
- Sound Pollution
- Biomass Potentials
- Land Use & Infrastructure
- Remote Sensing & Copernicus



Example applications

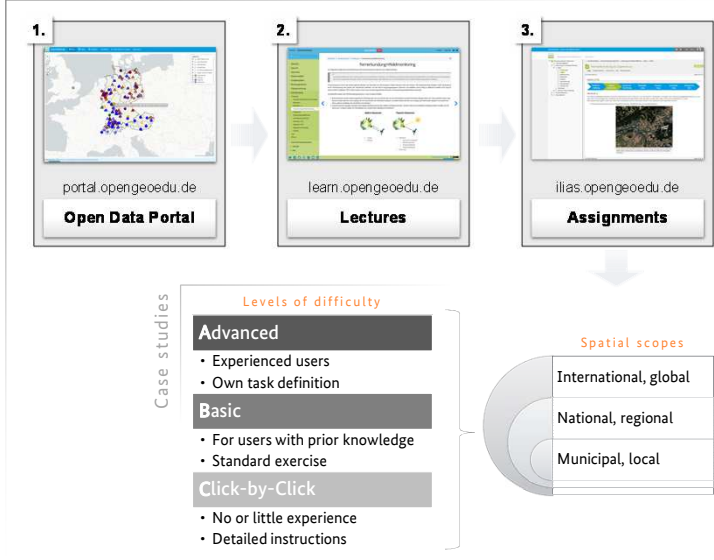
- Forest windthrow detection
- City trees & green space identification
- Urban land cover change



Acknowledgements

Sincere thanks to the project coordinator the Professorship for Geodesy and Geoinformatics (GG) at the University of Rostock and project partners German Biomass Research Centre (DBFZ) and Leibniz Institute of Ecological Urban and Regional Development (IÖR). The joint project is supported by the Modernity Fund (mFUND) of the Federal Ministry of Transport and Digital Infrastructure (BMVI).

Concept



Summary & Outlook

- OpenGeoEdu is online and open for everyone (hosted at University of Rostock)
- Interdisciplinary and comprehensive expertise (potentially large circle of users)
- Courses currently in German language (English parts could reach a wider audience)
- Implementation of further cases studies (also extendable by teachers and users)



Further information

Federal Agency for Cartography and Geodesy
Department GeoInformation
Development and Remote Sensing
Richard-Strauss-Allee 11, 60598 Frankfurt am Main, Germany

Do not hesitate to visit and contact us!



www.opengeoedu.de
info@opengeoedu.de
<https://twitter.com/opengeoedu>

www.bkg.bund.de
henning.aberle@bkg.bund.de
https://twitter.com/BKG_Bund

